



# Talend Open Studio for Data Integration

Installation and Upgrade Guide for  
Windows

## 6.3.2

Adapted for v6.3.2. Supersedes previous releases.

Publication date: September 7, 2017

## Copyright

This documentation is provided under the terms of the Creative Commons Public License (CCPL).

For more information about what you can and cannot do with this documentation in accordance with the CCPL, please read: <http://creativecommons.org/licenses/by-nc-sa/2.0/>

## Notices

Talend is a trademark of Talend, Inc.

All brands, product names, company names, trademarks and service marks are the properties of their respective owners.

## License Agreement

The software described in this documentation is licensed under the Apache License, Version 2.0 (the "License"); you may not use this software except in compliance with the License. You may obtain a copy of the License at <http://www.apache.org/licenses/LICENSE-2.0.html>. Unless required by applicable law or agreed to in writing, software distributed under the License is distributed on an "AS IS" BASIS, WITHOUT WARRANTIES OR CONDITIONS OF ANY KIND, either express or implied. See the License for the specific language governing permissions and limitations under the License.

This product includes software developed at AOP Alliance (Java/J2EE AOP standards), ASM, Amazon, AntLR, Apache ActiveMQ, Apache Ant, Apache Axiom, Apache Axis, Apache Axis 2, Apache Batik, Apache CXF, Apache Chemistry, Apache Common Http Client, Apache Common Http Core, Apache Commons, Apache Commons Bcel, Apache Commons JXPath, Apache Commons Lang, Apache Derby Database Engine and Embedded JDBC Driver, Apache Geronimo, Apache Hadoop, Apache Hive, Apache HttpClient, Apache HttpComponents Client, Apache JAMES, Apache Log4j, Apache Lucene Core, Apache Neethi, Apache POI, Apache ServiceMix, Apache Tomcat, Apache Velocity, Apache WSS4J, Apache WebServices Common Utilities, Apache Xml-RPC, Apache Zookeeper, Box Java SDK (V2), CSV Tools, DataStax Java Driver for Apache Cassandra, Ehcache, Ezmorph, Ganymed SSH-2 for Java, Google APIs Client Library for Java, Google Gson, Groovy, Guava: Google Core Libraries for Java, H2 Embedded Database and JDBC Driver, Hector: A high level Java client for Apache Cassandra, Hibernate Validator, HighScale Lib, HsqlDB, Ini4j, JClouds, JLine, JSON, JSR 305: Annotations for Software Defect Detection in Java, JUnit, Jackson Java JSON-processor, Java API for RESTful Services, Java Agent for Memory Measurements, Jaxb, Jaxen, Jettison, Jetty, Joda-Time, Json Simple, LightCouch, MetaStuff, Mondrian, OpenSAML, Paracel JDBC Driver, PostgreSQL JDBC Driver, Resty: A simple HTTP REST client for Java, Rocoto, SL4J: Simple Logging Facade for Java, SQLite JDBC Driver, Simple API for CSS, SshJ, StAX API, StAXON - JSON via StAX, The Castor Project, The Legion of the Bouncy Castle, W3C, Woden, Woodstox: High-performance XML processor, Xalan-J, Xerces2, XmlBeans, XmlSchema Core, Xmlsec - Apache Santuario, Zip4J, atinject, dropbox-sdk-java: Java library for the Dropbox Core API, google-guice. Licensed under their respective license.

---

# Table of Contents

<b>Preface</b> .....	<b>v</b>
<b>1. General information</b> .....	<b>v</b>
1.1. Purpose .....	v
1.2. Audience .....	v
1.3. Typographical conventions .....	v
<b>2. Feedback and Support</b> .....	<b>v</b>
<b>Chapter 1. Before installing your Talend product</b> .....	<b>1</b>
<b>1.1. Preparing your installation</b> .....	<b>2</b>
1.1.1. Files to download .....	2
1.1.2. Community and Support .....	2
<b>1.2. Hardware requirements</b> .....	<b>2</b>
<b>1.3. Software requirements</b> .....	<b>3</b>
1.3.1. Compatible Operating Systems .....	3
1.3.2. Java .....	4
<b>Chapter 2. Installing Talend Studio for the first time</b> .....	<b>7</b>
<b>2.1. Downloading and installing Talend Studio</b> .....	<b>8</b>
<b>2.2. Launching your Talend Studio</b> .....	<b>8</b>
2.2.1. Launching your Studio .....	8
<b>2.3. Installing external modules</b> .....	<b>9</b>
2.3.1. Identify required external modules .....	9
2.3.2. Install external modules .....	12
<b>Chapter 3. Upgrading your Talend products</b> .....	<b>15</b>
<b>3.1. Backing up the environment</b> .....	<b>16</b>
<b>3.2. Upgrading the Talend projects in the Studio</b> .....	<b>16</b>
<b>Appendix A. Appendices</b> .....	<b>17</b>
A.1. Supported Third-Party System/Database/Business Application Versions .....	18
A.1.1. Supported systems, databases and business applications by Talend components .....	18



---

# Preface

## 1. General information

### 1.1. Purpose

This Installation Guide explains how to install configure and upgrade the *Talend* modules and related applications. For detailed explanation on how to use and fine-tune the *Talend* applications, please refer to the appropriate Administrator or User Guides of the *Talend* solutions.

Information presented in this document applies to *Talend* products **6.3.2**.

### 1.2. Audience



This guide is for administrators and users of the *Talend* products.



The layout of GUI screens provided in this document may vary slightly from your actual GUI.

### 1.3. Typographical conventions

This guide uses the following typographical conventions:

- text in **bold**: window and dialog box buttons and fields, keyboard keys, menus, and menu options,
- text in [**bold**]: window, wizard, and dialog box titles,
- text in *courier*: system parameters typed in by the user,
- text in *italics*: file, schema, column, row, and variable names,
- The  icon indicates an item that provides additional information about an important point. It is also used to add comments related to a table or a figure,
- The  icon indicates a message that gives information about the execution requirements or recommendation type. It is also used to refer to situations or information the end-user needs to be aware of or pay special attention to.
- Any command is highlighted with a grey background or code typeface.

## 2. Feedback and Support

Your feedback is valuable. Do not hesitate to give your input, make suggestions or requests regarding this documentation or product and find support from the **Talend** team, on **Talend**'s Forum website at:

<http://talendforge.org/forum>



# Chapter 1. Before installing your Talend product

These pages present and list everything you need to know before installing your *Talend* product:

- [\*Preparing your installation\*](#)
- [\*Hardware requirements\*](#)
- [\*Software requirements\*](#)

# 1.1. Preparing your installation

These pages provide information about:

- [Files to download](#)
- [Community and Support](#)

## 1.1.1. Files to download

Here are the files you need to download to install your *Talend* product:

- the software packages. For more information, see [Software package](#).

### 1.1.1.1. Software package

This page details the software package you need to download to install your *Talend* product.

In this page:

- YYYYMMDD\_HHmm corresponds to the package timestamp
- A.B.C. corresponds to package version number (Major. Minor. Patch.)

**Table 1.1. Manual installation software package**

Zip/jar file name	Description
Talend-Studio-YYYYMMDD_HHmm-VA.B.C.zip	Studio IDE (GUI)

To download it, go to [this page](#).

## 1.1.2. Community and Support

There are several ways to get help and support for your *Talend* installation:

- [Official Talend Documentation](#). Here you can find everything to help you install and use your *Talend* product.
- [Talend Community](#). This is the place where you can ask questions to the community, and get answers.

# 1.2. Hardware requirements

Before installing your *Talend* product, make sure the machines you are using meet the following hardware requirements recommended by *Talend*.

Memory usage heavily depends on the size and nature of your *Talend* projects. However, in summary, if your Jobs include many transformation components, you should consider upgrading the total amount of memory allocated to your servers, based on the following recommendations.



**Table 1.2. Memory usage**

Product	Client/Server	Recommended alloc. memory
<i>Studio</i>	Client	3 GB minimum, 4 GB recommended

The same requirements also apply for disk usage. It also depends on your projects but can be summarized as:

**Table 1.3. Disk usage**

Product	Client/Server	Required disk space for installation	Required disk space for use
<i>Studio</i>	Client	3 GB	3+ GB

## 1.3. Software requirements

These pages contain the exhaustive list of the databases and third party software that are compatible and supported with the 6.3.2 version of your *Talend* product.

- [Compatible Operating Systems](#)
- [Java](#)

### 1.3.1. Compatible Operating Systems



In the following documentation:

- recommended: designates an environment recommended by *Talend* based on our experiences and customer usage;
- supported: designates a supported environment for use with the listed component or service;
- supported with limitations: designates an environment that is supported by *Talend* but with certain conditions explained in notes.

The information contained in the following table is applicable for the 6.3.2 version of your Talend product at the time of its release. For updated information on the latest supported versions of the third-party systems, see the online version of this page on [Talend Help Center](#).

These tables provide a summary of the supported Operating Systems.

**Table 1.4. Talend Studio**

Support type	Operating System (64-bit)	
Recommended	Linux	Ubuntu 16.04 LTS
	Windows	Microsoft Windows Professional 7
Supported	Linux	Ubuntu 14.04 LTS
		Ubuntu 12.04 LTS
		Red Hat Enterprise Linux Server/CentOS 7.3
		Red Hat Enterprise Linux Server/CentOS 7.2
		Red Hat Enterprise Linux Server/CentOS 7.1
		Red Hat Enterprise Linux Server/CentOS 6.8
		Red Hat Enterprise Linux Server/CentOS 6.7
	Windows	Microsoft Windows 10

Support type	Operating System (64-bit)	
		Microsoft Windows 8.1
		Microsoft Windows Server 2012 R2 RTM
	Mac	macOS 10.12 Sierra
		OS X 10.11 El Capitan
		OS X 10.10 Yosemite

## 1.3.2. Java

In order to use your *Talend* product, Java must be installed on your machine. If you install your *Talend Studio* using the *Talend Studio Installer*, you do not need to set up a Java Environment as it is embedded in the Installer.

These pages list:

- [Compatible Java environments](#)
- [Setting up JAVA\\_HOME](#)

### 1.3.2.1. Compatible Java environments



In the following documentation:

- recommended: designates an environment recommended by *Talend* based on our experiences and customer usage;
- supported: designates a supported environment for use with the listed component or service;
- supported with limitations: designates an environment that is supported by *Talend* but with certain conditions explained in notes.

The information contained in the following table is applicable for the 6.3.2 version of your Talend product at the time of its release. For updated information on the latest supported versions of the third-party systems, see the online version of this page on [Talend Help Center](#).

These tables provide a summary of the supported Java Runtime environments.

In this table:

- **(R)** means that this combination is recommended;
- means that this combination is supported;
- means that this combination is not supported.

Note that only the 64-bit versions of the compatible Java Runtime environments are supported.

The **Compiler Compliance Level** corresponds to the Java version used for the Job code generation. This option can be changed in the Studio preferences. For more information, see *Talend Studio User Guide*.

**Table 1.5. Studio Java environments**

Support Type	JRE Version	Studio JDK Compiler Compliance Level
Recommended	Oracle 8	1.7 (default)
Supported	Oracle 8	1.8

---

Depending on the license you have, the available Execution Servers may differ.

For example, the recommended combination is:

- Oracle 8 installed on the machine running the Studio;
- 1.7 set in the **Compiler Compliance Level** preferences of the Studio;
- Oracle 8 installed on the machine(s) running the Execution Server(s) and the Talend Server Application(s);
- Big Data Distributions compatible with Java 1.8 used.

For more information on Java specificities (version, Operating Systems compatibility), see [Talend Help Center](#) and [Talend Community](#).

### 1.3.2.2. Setting up JAVA\_HOME

In order for your *Talend* product to use the Java environment installed on your machine, you must set the `JAVA_HOME` environment variable.

To do so, proceed as follows:

1. Find the folder where Java is installed, usually `C:\Program Files\Java\JREx.x.x`.
2. Open the **Start** menu and type `Environment variable` in the search bar to open the Environment variable properties.
3. Click **Environment Variables...**
4. Under **System Variables**, click **New...** to create a variable. Name the variable `JAVA_HOME`, enter the path to your Java JRE, and click **OK**.
5. Under **System Variables**, select the **Path** variable, click **Edit...** and add the following variable at the end of the `Path` variable value:

```
;%JAVA_HOME%\bin
```





## Chapter 2. Installing Talend Studio for the first time

We strongly encourage you to read the [Before installing your Talend product](#) before starting this chapter.

This chapter details the procedures required to install Talend Studio.

## 2.1. Downloading and installing Talend Studio

### Download

1. Download the product on [this page](#).

Note that the `.zip` file contains binaries for ALL platforms (Linux/Unix, Windows and MacOS).

2. Once the download is complete, extract the archive file on your hard drive.



It is recommended to avoid spaces and long names in the target installation directory path.

### Configure the memory settings

- If you want to tune the memory allocation for your JVM, you only need to edit the `TOS_DI-win-x86_64.ini` file.

The default values are:

```
-vmargs -Xms40m -Xmx500m -XX:MaxMetaspaceSize=128m
```

If you only have 512MB of memory on your computer, you can specify the memory allocation as following, for example:

```
-vmargs -Xms40m -Xmx256m -XX:MaxMetaspaceSize=64m
```

Learn more on <http://www.oracle.com/technetwork/java/hotspotfaq-138619.html>

## 2.2. Launching your Talend Studio

The following procedures describe how to launch the Studio, how to log in the Studio and how to create your first project.

### 2.2.1. Launching your Studio

#### Launch the Studio

- Double-click the `TOS_DI-win-x86_64.exe` executable file to launch your *Talend Studio*.

#### Public license

- First screen is a license screen. In the **[License]** window that appears, read and accept the terms of the license agreement to proceed to the next step.

#### Login and first project

1. As first time user, you need to set up a new project or you can also import a Demo project which gathers numerous job samples.

Select what you want to do next:

Create a new project:

Import a demo project

Import an existing project

---

Always ask me at startup

- To import a demo project, select **Import a demo project** and click **Finish**. In the dialog box that opens, select the project you want to import.

To create a new project, select **Create a new project** and enter the name of your project in the corresponding field.

- Click **Finish** when complete, to open a welcome window and launch the Studio.

## 2.3. Installing external modules

*Talend Studio* requires specific third-party Java libraries or database drivers (*.jar* files) to be installed to connect to sources and targets. Those libraries or drivers, known as external modules, can be required by some of *Talend* components or by some connection wizards or by both. Due to license restrictions, *Talend* may not be able to ship certain external modules within *Talend Studio*.

### 2.3.1. Identify required external modules

When you launch *Talend Studio* or select **Help > Install Additional Packages** in the *Talend Studio* menu, if any external modules are found missing for any features, the **[Additional Talend packages]** wizard opens, showing the **Optional** and **Required third-party libraries** check boxes. Make sure these check boxes are selected and click **Finish** to open the **[Download external modules]** dialog box, which lists all the available external modules, displays the license terms under which the external modules are provided, and lets you install all the modules at a single click. For more information, see [Install external modules](#).

On your design workspace, if a component requires the installation of external modules before it can work properly, a red error indicator appears on the component. With your mouse pointer over the error indicator, you can see a tooltip message showing which external modules are required for that component to work.

When you open the **Basic settings** or **Advanced settings** view of a component for which one or more external modules are required, you will see a piece of highlighted information about external modules, followed by an **Install** button. Clicking the **Install** button opens a wizard that will show you the external modules to be installed.

The **Modules** view lists all the modules required to use the components embedded in the Studio, including those Java libraries and drivers that you must install to get the relevant components or Metadata connection working.

If the **Modules** view is not shown under your design workspace, go to **Window > Show View... > Talend** and then select **Modules** from the list.

Status	Context	Module	Description	Required
Not installed	tJasperOutput	batik-xml-1.7.jar	Required for using this component.	<input checked="" type="checkbox"/>
Not installed	tJasperOutputExec	batik-xml-1.7.jar	Required for using this component.	<input checked="" type="checkbox"/>
Installed	tCloudStart	bcprov-jdk16-1.46.jar	Required for using this component.	<input type="checkbox"/>
Installed	tCloudStop	bcprov-jdk16-1.46.jar	Required for using this component.	<input type="checkbox"/>
Installed	plugin:bcprov	bcprov_1.51.0.jar		<input type="checkbox"/>
Installed	tESBConsumer	bcprov_1.51.0.jar	Required for using this component.	<input type="checkbox"/>
Installed	tESBConsumer	bcprov_1.51.0.jar	Required for using this component.	<input checked="" type="checkbox"/>
Installed	tRESTClient	bcprov_1.51.0.jar	Required for using this component.	<input type="checkbox"/>
Installed	tRESTClient	bcprov_1.51.0.jar	Required for using this component.	<input checked="" type="checkbox"/>
Not installed	tBonitaInstantiat...	bonita-client-5.2.3.jar	Required for using this component.	<input type="checkbox"/>
Not installed	tBonitaDeploy	bonita-client-5.2.3.jar	Required for using this component.	<input type="checkbox"/>
Not installed	tBonitaInstantiat...	bonita-client-5.3.jar	Required for using this component.	<input type="checkbox"/>

The table below describes the information presented in the **Modules** view.

Column	Description
<b>Status</b>	<p>points out if a module is installed or not installed on your system.</p> <p>The  icon indicates that the module is not necessarily required for the corresponding component or Metadata connection listed in the <b>Context</b> column.</p> <p>The  icon indicates that the module is absolutely required for the corresponding component or Metadata connection.</p>
<b>Context</b>	<p>lists the name of <b>Talend</b> component or Metadata connection using the module. If this column is empty, the module is then required for the general use of <i>Talend Studio</i>.</p> <p> This column lists any external libraries added to the routines you create and save in the Studio library folder. For more information, see the <i>Talend Studio User Guide</i>.</p>
<b>Module</b>	lists the module exact name.
<b>Description</b>	explains why the module/library is required.
<b>Required</b>	the selected check box indicates that the module is required.

In addition to the **Modules** view, the Studio provides a mechanism that enables you to easily identify, download and install most of the required third-party modules from the **Talend** website and directs you to valid websites for the rest.

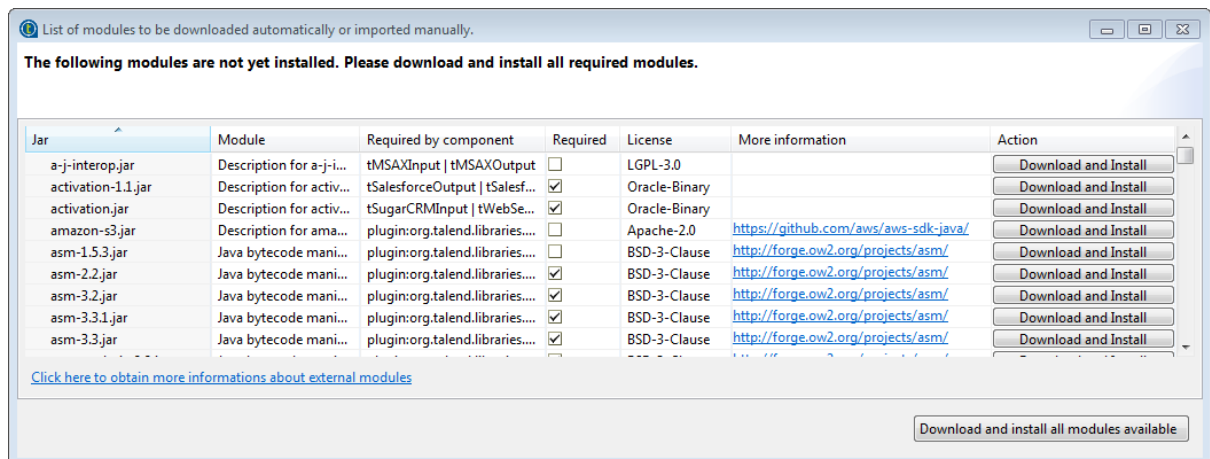
A Jar installation wizard appears whenever any required external module is found missing for any feature in the Studio, including when you:

- drop a component from the **Palette** if one or more external modules required for that component to work are missing in the Studio, or
- click the **Check** button in a Metadata connection setup wizard in *Talend Studio* if one or more external modules required for the connection are missing in the Studio, or
- click the **Guess schema** button in the **Component** view of a component if one or more external modules required for that component to work are missing in the Studio,
- click **Install** on the top of the **Basic settings** or **Advanced settings** view of a component for which one or more required external modules are missing,
- run a Job that involves components or Metadata connections for which one or more required external modules are missing, or
- click the button in the **Modules** view.

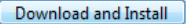


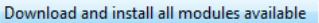





When you click this button, the wizard that appears will list all the required external modules that are not integrated in the Studio.



The table below describes the information presented in the wizard.

Item	Description
<b>Jar</b>	The file name of the external module.
<b>Module</b>	A short description about the nature of the module.
<b>Required by component</b>	Lists the components that require the external module.
<b>Required</b>	The selected check box indicates that the module is required.
<b>License</b>	The license under which the module is provided.
<b>More information</b>	Provides the URL of the valid website where you can find more information about this module and download the module manually.
<b>Action</b>	<p>: Click to open the <b>[Download external modules]</b> dialog box to download and install the module, which is available on the <b>Talend</b> website;</p> <p><a href="#">Open in browser</a> : Click the link to open the valid website to download the module, which is not available on the <b>Talend</b> website, and then click the jar button to import the downloaded module into your studio;</p> <p>: You need to find and download the module yourself and click the jar button to import it into the your studio.</p>
	Click to open the <b>[Download external modules]</b> dialog box to download and install all the required modules that are available on the <b>Talend</b> website.
<b>Do not show again</b>	<p>Select to prevent the wizard from appearing again unless you click the  button in the <b>Modules</b> tab view.</p> <p>This check box shows only when you drop a component, set up a connection, or guess the schema of a database, that requires an external module, or click the <b>Install</b> button on the <b>Component</b> tab of a component that requires an external module.</p>
<b>Click here to obtain more information about external modules</b>	Click to go to <b>Talend</b> online documentation on installing third-party modules.

This wizard lists the external modules to be installed, the licenses under which they are provided, and the URLs of the valid websites where they are downloadable, and allows you to download and install automatically all the modules available on the Talend website and download those not available on the **Talend** website by following the links provided in the **Action** column and then install them into your Studio manually.

When you drop a component, set up a connection, or guess the schema of a database, that requires an external module for which neither the Jar file nor its download URL information is available on the **Talend** website, the Jar installation wizard does not appear, but the **Error Log** view will present an error message informing you that

the download URL for that module is not available. You can try to find and download it by yourself, and then install it manually into the Studio.



To show the **Error Log** view on the tab system, go to **Window > Show views**, then expand the **General** node and select **Error Log**.

## 2.3.2. Install external modules

### To download and install modules in the Studio

To download and install external modules automatically, do the following:



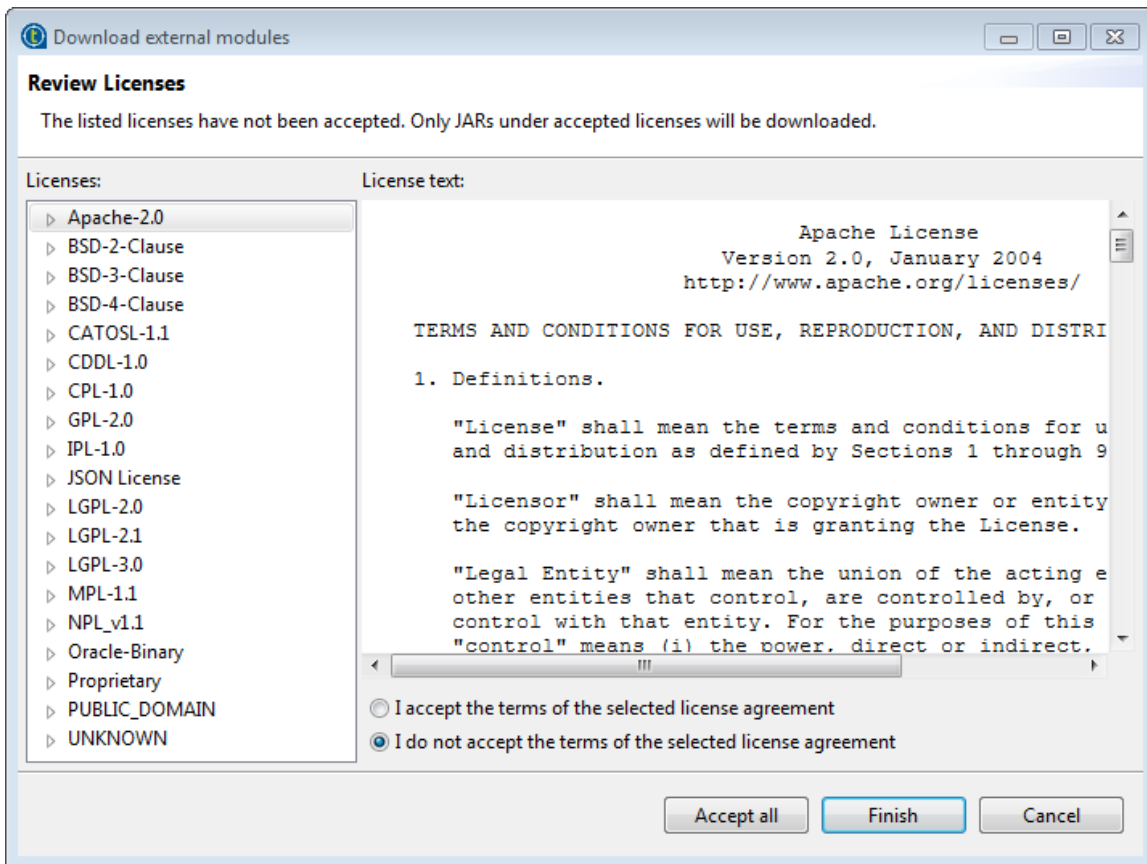
*If you are working behind a network proxy, make sure you have correctly set up your proxy before you can download and install external modules in your Studio. To access the proxy settings, select **Window > Preferences** from the menu to open the [Preferences] window, then expand the **General** node and click **Network Connections**.*

*Add the web site <http://talend-update.talend.com> and the port 443 to the whitelist.*

1. In the Jar installation wizard, click the **Download and Install** button to install a particular module, or click the **Download and install all modules available** button to install all the available modules, or select **Help > Install Additional Packages** from the menu to open the [Additional Talend Packages] wizard. From this wizard, make sure the Optional and Required third-party libraries check boxes are selected and click **Finish**. The [Download external modules] dialog box opens.



This [Additional Talend Packages] wizard appears automatically when you launch *Talend Studio* if any additional packages, including external modules, need to be installed for any features to function in the Studio.



2. To download and install the external module(s) provided under a particular license, select that license from the **Licenses** pane, review the license terms, select the **I accept the terms of the license agreement** option, and click **Finish** to start the download and installation process.

To download and install all external modules provided under all the listed licenses, click the **Accept all** button to start the download and installation process.

Upon installation of the chosen external module or modules, a dialog box appears to notify you about the number of modules successfully installed and/or about the modules failed to install, if any.

To install manually an external module you already have in your local file system, do the following:

1. Click the  button in the upper right corner of the **Modules** view or in Jar installation wizard to browse your local file system.

If the **Modules** view is not shown under your design workspace, go to **Window > Show View... > Talend** and then select **Modules** from the list.

2. In the **[Open]** dialog box of your file system, browse to the module you want to install, double-click the *.jar* file, or select it and then click **Open** to install it.

The dialog box closes and the selected module is installed in the library folder of the current Studio.

You can now use the component or Metadata connection dependent on this module in any of your Job designs.





## Chapter 3. Upgrading your Talend products

This chapter describes the various operations required to migrate version of the *Talend* solutions.

We assume that you have installed and configured these solutions as described in the [Installing Talend Studio for the first time](#).

The migration and upgrade process includes the following mandatory steps:



These steps usually need to be completed in the following order.

1. Backing up the environment, see the [Backing up the environment](#).
2. Upgrading the Talend projects in the Studio, see the [Upgrading the Talend projects in the Studio](#).

## 3.1. Backing up the environment

Before you start migrating your *Talend* solutions, make sure your environment is correctly backed up.


The environment backup process includes the following mandatory steps:



These steps usually need to be completed in the following order.

1. Saving the local projects, see [Saving the local projects](#).

### Saving the local projects

1. Launch the Studio.
2. Click the  icon and export your local projects to an archive file.

## 3.2. Upgrading the Talend projects in the Studio

### Importing your local projects

1. Launch the new Studio you have just installed.
2. In the login window, select **Import**, then import the archive file containing your local projects.

The local projects are displayed in the **Project** list and appear on the Studio **Repository** view.



For more information on how to export local projects to an archive file, see [Saving the local projects](#).



## Appendix A. Appendices

The following appendices contain complementary information to go further with your *Talend* product:

- *Supported Third-Party System/Database/Business Application Versions*

## A.1. Supported Third-Party System/Database/Business Application Versions

This document provides the information about the versions of the systems or databases or business applications supported by Talend Studio.

### A.1.1. Supported systems, databases and business applications by Talend components

The information contained in the following table is applicable for the 6.3.2 version of your Talend product at the time of its release. For updated information on the latest supported versions of the third-party systems, see the online version of this page on [Talend Help Center](#).

The access to these systems, databases and business applications varies depending on the Studio you are using.

Systems/Databases	Versions	OS	Available with...
<b>Alfresco</b>	2.1	N/A <sup>1</sup>	All <b>Talend</b> products
<b>Amazon Redshift</b>	Initial release of Amazon Redshift	N/A <sup>1</sup>	All <b>Talend</b> products
<b>AS/400</b>	V5R2 to V5R4 V5R3 to V6R1 V6R1 to V7R2	N/A <sup>1</sup>	All <b>Talend</b> products
<b>Access</b> <sup>2</sup>	2003 2007	Windows	<b>Talend</b> products with Data Integration (DI), Master Data Management (MDM), Enterprise Service Bus (ESB) or Big Data
<b>Bonita</b>	5.2.3 5.3.1 5.6.1 5.10.1 6.5.2 7.2.4	N/A <sup>1</sup>	All <b>Talend</b> products
<b>Cassandra</b>	2.0.0 3.0/3.1/3.2/3.3/3.4 (Deprecated versions: 1.1.2/1.2.2)	Windows + Linux	<b>Talend</b> products with Big Data
<b>CouchBase</b>	2.0	Windows	<b>Talend</b> products with Big Data
<b>CouchDB</b>	1.0.2	Windows	<b>Talend</b> products with Big Data
<b>DB Generic</b>	ODBC	Windows	All <b>Talend</b> products
<b>DB2</b>	10.5 10.1	Windows + Linux	<b>Talend</b> components with all products. <b>Talend</b> products with MDM or ESB.
<b>DynamoDB</b>	No specified version	N/A <sup>1</sup>	<b>Talend</b> products with Big Data
<b>EXASolution</b>	4	Windows	<b>Talend</b> products with DI, MDM, ESB or Big Data
<b>Elasticsearch</b>	Until 2.3.X	N/A <sup>1</sup>	<b>Talend</b> products with Big Data
<b>FireBird</b>	2.1	Windows + Linux	<b>Talend</b> products with DI, MDM, ESB or Big Data



Systems/Databases	Versions	OS	Available with...
<b>Greenplum</b>	4.2.1.0	Windows (client only) + Linux	<b>Talend</b> products with DI, MDM, ESB or Big Data
<b>HSQLDb</b>	1.8.0	N/A <sup>1</sup>	<b>Talend</b> products with DI, MDM, ESB or Big Data
<b>Informix</b>	11.50	Windows + Linux	All <b>Talend</b> products
<b>Ingres</b>	9.2	Windows + Linux	All <b>Talend</b> products
<b>Interbase</b>	7 and above	N/A <sup>1</sup>	<b>Talend</b> products with DI, MDM, ESB or Big Data
<b>JavaDB</b>	6	Windows + Linux	<b>Talend</b> products with DI, MDM, ESB or Big Data
<b>Kafka</b>	0.8.2.0 0.9.0.1 <sup>3</sup> 0.10.0.1 <sup>3</sup>	Windows + Linux	<b>Talend</b> products with Big Data
<b>LDAP</b>	No version limitation	Windows + Linux	All <b>Talend</b> products
<b>Microsoft AX</b>	Dynamics AX 4.0 Dynamics AX 2012	N/A <sup>1</sup>	All <b>Talend</b> products
<b>Microsoft CRM</b>	4.0 2011 2013 2015	N/A <sup>1</sup>	All <b>Talend</b> products
<b>MS SQL Server</b>	2000 2003 2005 2008 2012 2014 <sup>4</sup> 2016 <sup>4</sup>	Windows + Linux	All <b>Talend</b> products
<b>MaxDB</b>	7.6	N/A <sup>1</sup>	<b>Talend</b> products with DI, MDM, ESB or Big Data
<b>MongoDB</b>	2.5.X 2.6.X 3.0.X 3.2.X	Windows + Linux	<b>Talend</b> products with Big Data
<b>MySQL</b>	Mysql4 Mysql5 MariaDB	Windows + Linux	All <b>Talend</b> products
<b>Netezza</b>	7.2	Windows + Linux	All <b>Talend</b> products
<b>Neo4j</b>	1.X.X 2.X.X/2.2.X/2.3	Linux	<b>Talend</b> products with Big Data
<b>OleDb</b>	2000 2003 2005	N/A <sup>1</sup>	All <b>Talend</b> products

Systems/Databases	Versions	OS	Available with...
	2007 2010		
<b>Oracle</b>	Oracle 8i/9i/10g/11g/11g (11.6)/12c	Windows + Linux	All <b>Talend</b> products
<b>ParAccel</b>	3.1 3.5	N/A <sup>1</sup>	<b>Talend</b> products with DI, MDM, ESB or Big Data
<b>PostgreSQL</b>	Prior to v9/v9.X	Windows + Linux	All <b>Talend</b> products
<b>PostgresPlus</b>	Prior to v9/v9.X	Windows + Linux	<b>Talend</b> products with DI, MDM, ESB or Big Data
<b>Red Hat BRMS</b>	6.1	Windows + Linux	<b>Talend</b> products with DI, MDM, ESB or Big Data
<b>Salesforce</b>	V37 and earlier	Windows + Linux	All <b>Talend</b> products
<b>SAP</b>	ECC 6.0 EhP6	Windows	All <b>Talend</b> products
<b>SAP Hana</b>	1.0	Windows	All <b>Talend</b> products
<b>SAS</b>	9.1 9.2	Windows + Linux	<b>Talend</b> products with DI, MDM, ESB or Big Data
<b>SQLite</b>	3.6.7	Windows + Linux	All <b>Talend</b> products
<b>Sybase</b>	12.5 12.7 15.2 15.5 15.7	Windows + Linux	All <b>Talend</b> products
<b>SybaseIQ</b>	12.5 12.7 15.2	Windows + Linux	All <b>Talend</b> products
<b>Teradata</b>	12 13 14 15	Windows + Linux	All <b>Talend</b> products
<b>VectorWise</b>	2	Windows + Linux	<b>Talend</b> products with DI, MDM, ESB or Big Data
<b>Vertica</b>	3 3.5 4 4.1 5.0 5.1 6.0 6.1.X 7.0.X 7.1.X	Windows + Linux	<b>Talend</b> products with DI, MDM, ESB or Big Data

---

<b>Systems/Databases</b>	<b>Versions</b>	<b>OS</b>	<b>Available with...</b>
<b>VtigerCRM</b>	Vtiger 5.0	N/A <sup>1</sup>	All <b>Talend</b> products
	Vtiger 5.1		

1. The test information is not available yet.
2. When working with Java 8, only the General collation mode is supported.
3. For information about the security options supported by the Kafka components, see Talend Help Center.
4. No new feature introduced by MS SQL Server 2014/2016 is supported.

